

Monolithic HPLC Columns

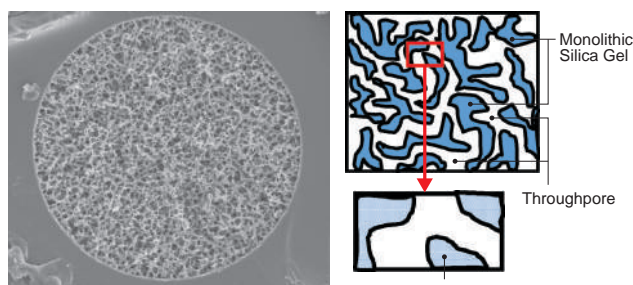


MonoCap High Resolution Columns

Monolithic silica capillary HPLC column which is designed for identifying extremely high number of peptides/proteins for proteome research via LC-MS/MS.

Monolithic Capillary HPLC Columns

MonoCap Series



Structure of Monolithic Silica

GL Sciences' MonoCap series, created synthetically via sol-gel method, and an octadecyl silane chemically bonded, has a very uniform three dimensional structure that shows excellent reproducibility from batch-to-batch. The solid structure of GL Sciences' monolithic silica eliminates the need for frits or filters at the ends of the column, thereby reducing dead volume that might otherwise lead to band broadening or sample recovery. The high porosity of our monolithic silica allows high flow rates to be used without loss of resolution or creation of high operating pressure. An optimized balance of throughpores and mesopores provides the critically important combination of efficiency, separation speed, large volume sample-loading, and small volume sample-recovery.

MonoCap High Resolution provide extremely high efficiency, delivering over 200,000 plates for a 2,000 mm length column. The High Resolution Ultra type deliver over 300,000 plates. The Fast-flow type is compatible with high flow rate analysis due to its' low flow resistance. In addition, the equilibration time can be minimized further by setting the flow rate high.

MonoCap Nano-flow is a high-density monolithic capillary column offering extremely high sensitivity in LC/MS due to the optimization of mesopore and throughpore sizes. MonoCap Trap columns have a relatively big throughpore, which are available for on-line preconcentration or desalting of protein and peptide samples prior to HPLC separation with mass spectrometry detection.

Physical Properties of MonoCap Series

Description	Monolithic Silica	Skeleton	Throughpore	Mesopore	Porosity	Bonded Phase	End-capping	Max. Operating Pressure
MonoCap C18 High Resolution 750	High Purity Silica Gel	1 µm	2 µm	15 nm	85 %	Octadecyl Groups	Yes	22 MPa
MonoCap C18 High Resolution 2000		1 µm	2 µm	15 nm	85 %	Octadecyl Groups	Yes	35 MPa
MonoCap C18 High Resolution Ultra 2000		1 µm	2 µm	11 nm	85 %	Octadecyl Groups	Yes	35 MPa
MonoCap C18 Fast-flow		1 µm	2 µm	15 nm	85 %	Octadecyl Groups	Yes	22 MPa
MonoCap C18 Nano-flow		1 µm	1 µm	11 nm	85 %	Octadecyl Groups	Yes	22 MPa
MonoCap C18 WideBore		1 µm	2 µm	11 nm	85 %	Octadecyl Groups	Yes	22 MPa
MonoCap C18 Trap Column		2 µm	5 µm	11 nm	85 %	Octadecyl Groups	Yes	20 MPa
MonoCap Amide		1 µm	2 µm	15 nm	85 %	Carbamoyl Groups	None	22 MPa
MonoCap SCX		2 µm	5 µm	11 nm	85 %	Benzenesulfonyl Groups	None	20 MPa
MonoCap HILIC-UP High Resolution 2000		1 µm	2 µm	12 nm	85 %	Ureidopropyl Groups	None	35 MPa

* Based on monolithic technology, Merck KGaA, Darmstadt, Germany.

End-fittings of MonoCap Monolithic Capillary HPLC Columns

MonoCap C18 High Resolution 750
 MonoCap C18 fast-flow
 MonoCap Nano-flow
 MonoCap C18 WideBore
 MonoCap Amide
 MonoCap SCX

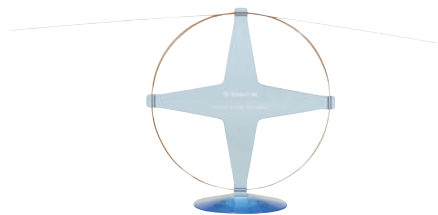
1. Metal Hardwares
 End-fittings are Valco 1/16" (10-32 UNF).
 Valco 1/32" (6-40 UNF) end-fittings can also be arranged upon request, indicate "1/32" when ordering.
2. PEEK Hardwares
 1/16" male nut, ferrule and PTFE sleeve are included.

MonoCap C18 High Resolution 2000
 MonoCap C18 High Resolution Ultra 2000
 MonoCap HILIC-UP High Resolution 2000

End-fittings are not included.
 The connection kits must be purchased separately.

Monolithic Capillary HPLC Columns

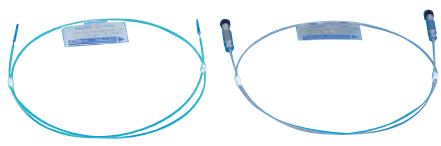
MonoCap™ C18 High Resolution/MonoCap™ C18 High Resolution Ultra



MonoCap High Resolution 2000

Maximizing all the benefits and advantages of monolithic technology, MonoCap High Resolution and High Resolution Ultra are appropriate for the efficient separation of peptides and protein digests.

The newly-introduced High Resolution Ultra type deliver over 300,000 plates.

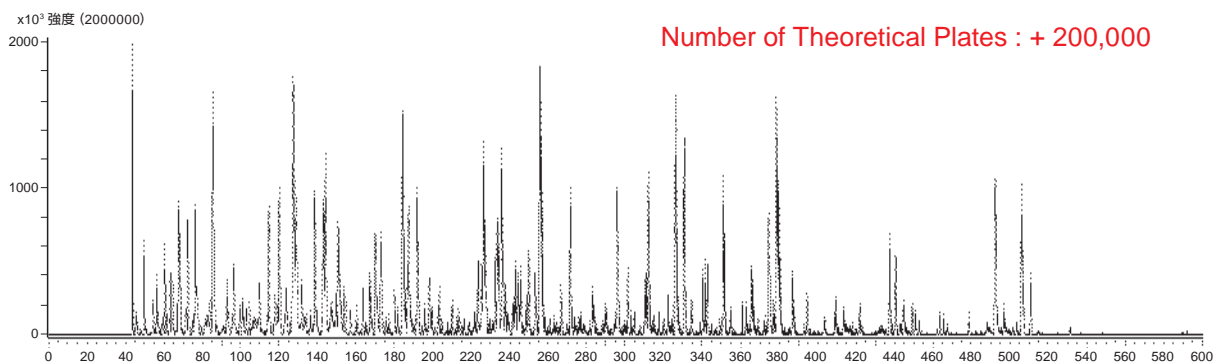


PEEK

Metal

MonoCap High Resolution 750

Figure 1 : Analysis of Tryptic Digests



Conditions

Column : MonoCap C18 High Resolution 2000 (2000 mm x 0.1 mm I.D.)
 Trap column : MonoCap C18 Trap Column (50 mm x 0.075 mm I.D.)
 Eluent : A) 0.1 % HCOOH in CH₃CN
 B) 0.1 % HCOOH in H₂O
 A/B = 10/90 - 600 min - 45/55, v/v

Flow Rate : 0.5 μL/min
 Injection Vol : 5 μL
 Detection : MS (TIC m/z 500 - 1500)
 Sample : Tryptic digest of proteins

MonoCap™ C18 High Resolution Ultra 2000

I.D.(mm)	Length(mm)	Cat.No.
0.1	2000	5020-10018

MonoCap™ C18 High Resolution 2000

I.D.(mm)	Length(mm)	Cat.No.
0.1	2000	5020-10015

MonoCap™ HILIC-UP High Resolution 2000

I.D.(mm)	Length(mm)	Cat.No.
0.1	2000	5020-10019

MonoCap HILIC-UP is an important addition to the MonoCap C18 High Resolution 2000 column series. MonoCap HILIC-UP can retain highly hydrophilic peptides/proteins which may lead to discovering new peptides/proteins where a C18 phase couldn't identify.

In HILIC, the higher the organic concentration, the greater the retention of more polar analytes. One of the biggest benefit of HILIC mode is, a high organic solvent concentration of the mobile phase will lead to a high sensitivity LC-MS/MS analysis.

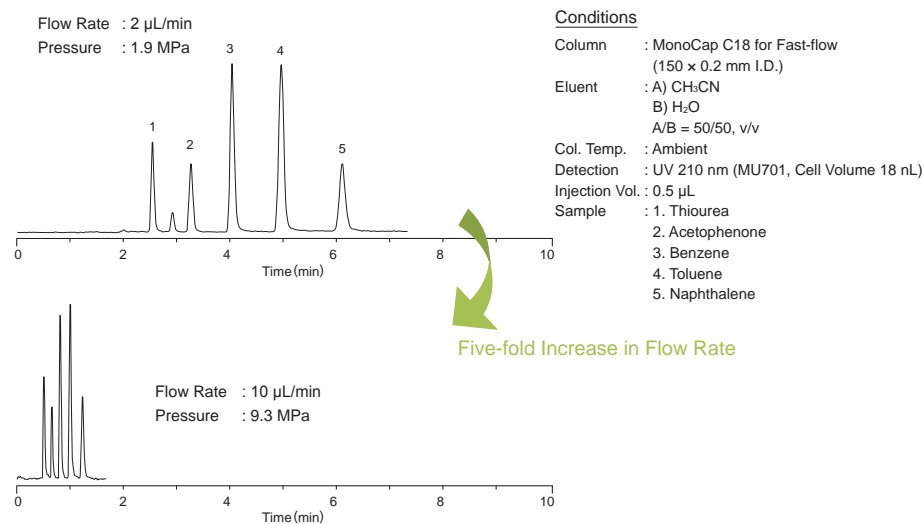
- * A column stand is included.
- * End-fittings are not included.

Reference:
 Hydrophilic Interaction Chromatography Using a Meter-Scale Monolithic silica capillary Column for Proteomics LC-MS,
 K Horie et al. Anal. Chem. 2014, 86, 3817-3824

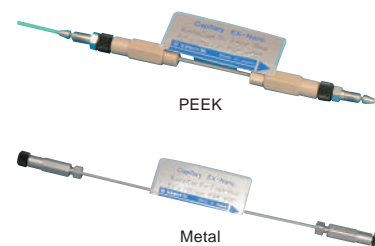
Monolithic Capillary HPLC Columns

MonoCap™ C18 Fast-flow

Figure 1 : Workable at High Flow Rates without Sacrificing Efficiency



Workable at a broad range of linear velocity from 0.5 to 5 mm/s without sacrificing efficiency and separation at high speed. The number of theoretical plates produced by MonoCap C18 Fast-flow is nearly equivalent to a totally porous particle type capillary column packed with a 5 µm packing material. Columns are protected by either metal or PEEK hardware.



I.D.(mm)	Length(mm)	50	150	250
	Material of Hardware	Cat.No.	Cat.No.	Cat.No.
0.05	Metal	5020-10102	5020-10101	5020-10100
	PEEK*	5020-10002	5020-10001	5020-10000
0.075	Metal	5020-10211	5020-10212	5020-10213
	PEEK*	5020-10221	5020-10222	5020-10223
0.1	Metal	5020-10112	5020-10111	5020-10110
	PEEK*	5020-10012	5020-10011	5020-10010
0.2	Metal	5020-10122	5020-10121	5020-10120
	PEEK*	5020-10022	5020-10021	5020-10020

* All 50 mm length PEEK columns does not come with a hardware and will be supplied with 3 pcs of columns only.

MonoCap™ C18 Nano-flow



MonoCap C18 Nano-flow produces higher number of theoretical plates compared to a totally porous particle type capillary column packed with a 3 µm packing material. It can be operated at a wide range of flow rate with low back pressure and achieve very high sensitive results in Nano-LC-ESI/MS applications. Columns are protected by either metal or PEEK hardware.

I.D.(mm)	Length(mm)	50	150
	Material of Hardware	Cat.No.	Cat.No.
0.05	Metal	5020-10143	5020-10141
	PEEK*	5020-10043	5020-10041
0.075	Metal	5020-10231	5020-10232
	PEEK*	5020-10241	5020-10242
0.1	Metal	5020-10153	5020-10151
	PEEK*	5020-10053	5020-10051
0.2	Metal	5020-10163	5020-10161
	PEEK*	5020-10063	5020-10061

* All 50 mm length PEEK columns does not come with a hardware and will be supplied with 3 pcs of columns only.

Monolithic Capillary HPLC Columns

MonoCap™ C18 WideBore



The MonoCap C18 Fast-flow is also available in 0.5 mm I.D. size, which can be used at a wide range of flow rate from 6 to 100 $\mu\text{L}/\text{min}$ without sacrificing efficiency. The number of theoretical plates produced by MonoCap C18 WideBore is nearly equivalent to a totally porous particle type capillary column packed with a 5 μm packing material. Columns are protected by metal hardwares.

I.D.(mm)	Length(mm)	50	150	250
	Material of Hardware	Cat.No.	Cat.No.	Cat.No.
0.5	Metal	5020-10202	5020-10201	5020-10200

MonoCap™ C18 Trap Column



MonoCap C18 Trap Column with Hardware
(Top Image: 1/16" End-fittings, Bottom Image: 1/32" End-fittings)

MonoCap Trap columns have a relatively big throughpore and workable at a high flow rate such as 10 $\mu\text{L}/\text{min}$. This benefit makes MonoCap Trap columns to be appropriate for on-line preconcentration or desalting of protein and peptide samples prior to HPLC separation with mass spectrometry detection.

End-fittings are 1/16" (10-32 UNF). 1/32" end-fittings are also available upon request.

I.D.(mm)	Length(mm)	50	100	150
	Hardware	Cat.No.	Cat.No.	Cat.No.
0.05	With Hardware	5020-10026	5020-10038	-
	Without Hardware	5020-10027	5020-10039	
0.075	With Hardware	5020-10028	5020-10036	
	Without Hardware	5020-10029	5020-10037	
0.2	With Hardware	5020-10033	-	5020-10031
	Without Hardware	5020-10034		

MonoCap™ Amide



Amide groups are chemically bonded to the monolithic silica and makes it suitable for the analysis of sugars via HILIC mode. As the back pressure is significantly low, a 500 mm length MonoCap Amide column deliver over 40,000 plates offering high efficiency. Generally, HILIC mode uses acetonitrile at a concentration between 65-95 % in an aqueous buffer such as ammonium acetate or ammonium formate, which have high solubility in organic solvents. Columns are protected by either metal or PEEK hardwares.

I.D.(mm)	Length(mm)	150	250	500
	Hardware	Cat.No.	Cat.No.	Cat.No.
0.075	Metal	5020-10191	5020-10192	5020-10193
	PEEK	5020-10091	5020-10092	5020-10093
0.1	Metal	5020-10181	5020-10182	5020-10183
	PEEK	5020-10081	5020-10082	5020-10083
0.2	Metal	5020-10171	5020-10172	5020-10173
	PEEK	5020-10071	5020-10072	5020-10073

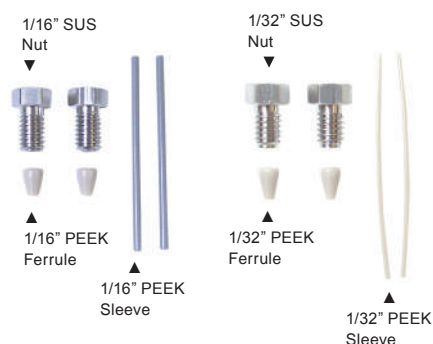
MonoCap™ SCX

MonoCap SCX is bonded with benzene sulfonic acid groups (strong cation exchange) and appropriate for 2D LC applications for the separation of biomolecules such as peptides and proteins.

I.D.(mm)	Length(mm)	50	150	250	500
	Material of Hardware	Cat.No.	Cat.No.	Cat.No.	Cat.No.
0.2	Metal	5020-10174	5020-10175	5020-10176	5020-10177
	PEEK	5020-10074	5020-10075	5020-10076	5020-10077

Consumables and Accessories for Monolithic Capillary HPLC Columns

Connection Kit for MonoCap™ C18 High Resolution



Connection Kit for MonoCap™ C18 High Resolution 2000

A dedicated connection kit for MonoCap C18 High Resolution 2000.

Use this connection kit when connecting the column directly to the system.

Description	Contents of Kit	Cat.No.
Connection Kit for MonoCap C18 High Resolution 2000	1/16" PEEK Ferrule, SUS Nut, Sleeve 2 pcs each 1/32" PEEK Ferrule, SUS Nut, Sleeve 2 pcs each	5020-10017

Zero Dead Volume Union

Connect the tubing from the system to this union and install the column to achieve zero dead volume.

Description	P/N	Orifice	Remarks	Cat.No.
Zero Dead Volume Union	U-435	0.25 mm	1/16" Tubing SUS Male Nut, Ferrule 2 pcs each	6010-72352
	U-411	178 µm		6010-72351

Connection Kit for MonoCap™ C18 Trap Column



MonoCap C18 Trap Column Connection Kit 1/16"

Description	Cat.No.
MonoCap C18 Trap Column Connection Kit 1/16" (Union-Sleeve-Capillary Tubing 2 pcs each Nut-Ferrule 4 pcs each)	5020-10044
MonoCap C18 Trap Column Connection Kit 1/32" (Union-Sleeve-Capillary Tubing 2 pcs each Nut-Ferrule 4 pcs each)	5020-10045
MonoCap C18 Trap Column Assembly Parts 1/16" (Nut-Ferrule 4 pcs each)	5020-10046
MonoCap C18 Trap Column Assembly Parts 1/32" (Nut-Ferrule 4 pcs each)	5020-10047

Worldwide Ordering Information

GL Sciences Inc. Japan
22-1 Nishishinjuku 6-Chome
Shinjuku-ku, Tokyo, 163-1130, Japan
Phone: +81-3-5323-6620
Fax: +81-3-5323-6621
Web: www.glsciences.com
Email: world@glsc.co.jp

GL Sciences B.V.
De Sleutel 9, 5652 AS Eindhoven
The Netherlands
Phone: +31 (0)40-2549531
Orders: orders@glsciences.eu
Web: www.glsciences.eu
Email: info@glsciences.eu

GL Sciences Inc. USA
4733 Torrance Blvd. Suite 255
Torrance, CA 90503
Phone: 310-265-4424
Fax: 310-265-4425
Web: www.glsciencesinc.com
Email: info@glsciencesinc.com

Distributor:
www.glsciences.com/distributors